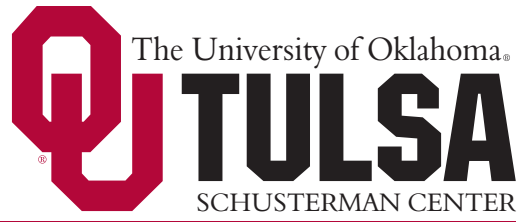


Play, Possibility & Learning

SEED SOWER
PRESENTATION



6:30 pm – 8 pm
Thursday, April 11
OU-Tulsa Schusterman Learning Center



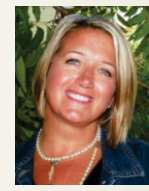
Play is fun stuff.
It's also a genuine necessity in learning about life. Not to take any of the vitally important fun out of play, but we now also recognize that play is important for human growth and healthy brain development. Play is important for physical health. Play is important for children . . . and yes, adults.

Join us for a fun, 'playful' evening about the serious subject of play with featured researcher and author Alison Gopnik, author Mei Ling Hopgood, Dr. Gabor Mate, physician and author, and Dr. Robert Block, pediatrician and immediate past president of the American Academy of Pediatrics.

A NEW ADDITION TO THE SEED SOWER:



Food for conference attendees and other guests will be available for purchase from on-site Food Trucks from 5 to 6:30 pm.



Panel Moderator:
Paige Whalen
Child Care Resource Center of Tulsa

Panelists:

Panelists are in Tulsa as presenters at the International Infant and Toddler Conference.



Alison Gopnik, Ph.D.
Professor of Psychology and Affiliate Professor of Philosophy, University of California at Berkeley
Author: *The Scientist in the Crib* and *The Philosophical Baby: What Children's Minds Tell Us About Love, Truth and the Meaning of Life*



Mei-Ling Hopgood
Associate Professor, Medill School of Journalism Northwestern University
Author: *How Eskimos Keep Their Babies Warm* and *Lucky Girl*



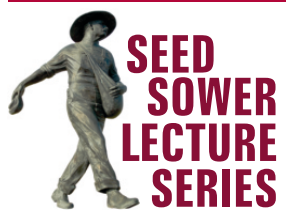
Gabor Mate, M.D.
Author: *When the Body Says No: Exploring the Stress-Disease Connection*, *Hold On To Your Kids: Why Parents Need to Matter More than Kids*, and numerous other books



Robert Block, M.D., FAAP
Immediate Past President American Academy of Pediatrics
Professor of Pediatrics University of Oklahoma School of Community Medicine



Introduction by
Diane Horn, Ph.D.
Director
Early Childhood Education Institute
University of Oklahoma – Tulsa



Lectures are free but reservations are requested:
tulsa.ou.edu
Or Call (918) 660-3907

For help and information on degree programs at OU-Tulsa contact Emily Dukes at **918-660-3318** or **Emily.dukes@ou.edu**

THE SOONER THE BETTER tulsa.ou.edu