

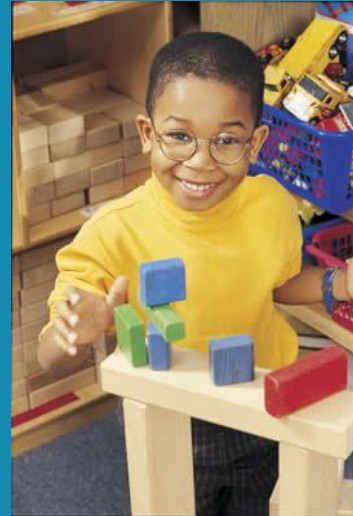
The Quality Enhancement Initiative



October 2012

Kids say the funniest things...

It is so much fun to 'spy' on young children at play. The interactions, conversations and imagination of children unhindered by an adults structure is a thing of beauty and often extremely funny. Authentic child assessment is much like being a fly on the wall in early childhood education. Research provides evidence of the positive effects that well-developed play has on various areas of child development, such as children's social skills, emerging mathematical ability, mastery of early literacy concepts, and self-regulation (Singer, Golinkoff, & Hirsh-Pasek 2006) Knowing how to assess young children is a critical part of providing that well-developed play environment. In NAEYC's YC article [Make Believe Play](#), the authors explore the valuable observations and assessments that can be made when we take the time to 'spy' on the children as they naturally explore their world. NAEYC also writes of the [power of documentation](#) and how those observations can be shared with children and families to involve everyone in the joy of helping our children grow and learn.



[Read NAEYC's position statement on Assessment](#)

What Best Practice has to say...

- Daily observations are used to document childrens interests, plan activities and assess development. (NAEYC 4.B.05, 4.D.01; NAFCC 5.21)
- Assessment is culturally, linguistically and developmentally appropriate (NAEYC 4.B)
- Families are informed about and included in the assessment process (NAEYC 4.E)

QEI Program Directors Meeting- October 16th, 12-2pm

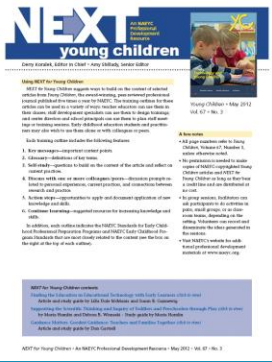
This month's topic is Assessment- NAEYC Standard 4. Bring your portfolios, questions and a lunch (if you'd like). All are welcome.

October 16th, 12-2pm

Spirit Bank (18th and Baltimore Branch-Conference Room)

1800 South Baltimore Avenue, Tulsa, 74119

For more information go to [QEI Program Directors Meetings](#)



Did you know?

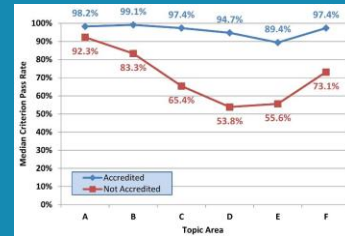
NAEYC is now offering study guides for many of the articles found in *Young Children* and *Teaching Young Children*. Look for **NEXT-YC** and **NEXT-TYC** at NAEYC.org, a NAEYC professional development resource.

The article referenced above; *The Power of Documentation* (June/July 2009 issue of TYC) handouts 1 and 2, 3 and 4 as well as further reflection are available for professional development.

Find out more!

NAEYC has issued its latest [Trend Briefs](#) evaluating Accreditation Standards across programs. The research shows what criteria were most predictive of success in achieving and maintaining accreditation.

Log in to [Torch](#) for more information.



Tulsa's **Quality Enhancement Initiative (QEI)** provides programs and intensive, ongoing support that includes training, technical assistance, and funds/materials to improve and maintain the quality of care and education that young children and families receive. Programs that access this support include traditional child care programs, family child care homes, faith based, non-profit and for profit, as well as Early Head Start/Head Start and public pre-k classrooms. The QEI accomplishes this using NAEYC's Standards and Criteria of best practice for early childhood programs and NAFCC's Standards of best practice for family child care homes. **Program quality improvement** is an essential element for elevating young children's well being and early learning opportunities. *Tulsa's QEI is the only NAEYC recognized Accreditation Facilitation Project in the state of Oklahoma.* We recognize that quality is a process that is achieved over time and with regular maintenance.

For more information about the Quality Enhancement Initiative or to speak to an Accreditation Specialist please [Contact Us](#) or join us at our [Program Directors meetings](#).

Sincerely,
The Quality Enhancement Initiative Team
Child Care Resource Center

