



# International infant & toddler conference

**"Our hands constitute the first relationship for the baby with the world. What a difference when gentle, patient and peaceful hands take care of him. How different his world would be if they were rough, impatient, and hasty. Hands are the world. No matter how small he may be, we never treat a child as an inanimate object."**

**-Dr. Emmi Pikler**

#### **Sponsored by**

Pikler-Lóczy Fund USA

Child Care Resource Center and JumpStart Tulsa of the  
Community Service Council of Greater Tulsa, Inc.

Day Schools, Inc.

Community Care College, Early Childhood Education Department

Oklahoma Institute for Child Advocacy

University of Oklahoma, Early Childhood Education Institute

Northeastern State University

Tulsa Community College

Tulsa Healthy Start, Tulsa Health Department

Smart Start Oklahoma

Adams Hall Asset Management

Robert Briley

Oklahoma State Department of Health

Delaware Child Development

april 23, 24, 25 tulsa, oklahoma, usa 2009

*Join us for an inspiring conference with unique offerings by internationally known presenters. They will share treasures left by Dr. Emmi Pikler and Magda Gerber, both of whom revolutionized the way we look at infancy and the early toddler years. See and experience the roots of cutting edge early childhood practices through Relationship-Based Care from organizations that have been espousing this method for more than sixty years, with hands-on experiences and archival footage.*

*Many talented and caring people devoted their time, expertise, and energy to making this conference happen. Presenters from near and far joined together because of their commitment to the Pikler Institute in Budapest, Hungary. The combined efforts of everyone will help support the continued research and training of infant and toddler professionals throughout the world.*

*This event is made possible through the talents of supporters of the Pikler Institute.*

**Parent Conference Thursday April 23, 2009 Oklahoma State University, Auditorium, 700 N. Greenwood, 7:00 p.m.**

**Professional Conference Friday and Saturday, April 24 and 25, 2009 Crowne Plaza, 8:00 a.m. to 5:00 p.m.**

8:00 a.m.—8:30 a.m.	Registration and continental breakfast
8:30 a.m.—8:45 a.m.	Opening introductions and recognitions
8:45 a.m.—10:00 a.m.	Opening address
10:15 a.m.—11:30 a.m.	Concurrent sessions I and II
11:30 a.m.—1:00 p.m.	Lunch and presentation
1:15 p.m.—2:45 p.m.	Concurrent sessions III and IV
3:00 p.m.—4:30 p.m.	Concurrent sessions V and VI

**Special Friday Workshop Option:**

*How to Start Parent/Infant Classes in Your Neighborhood (4-hour training for trainers)* Topics to be covered include: Magda Gerber's RIE Approach to a parent/infant class, basic principles, process, the orientation meeting, in-depth discussion of parent/infant class framework, setting-up environments for classes, role of the facilitator and group dynamics, and parent issues and developmental concerns. Additionally, content will center on infant group play sessions including: reading and responding to your baby's cues and signals, fostering pro-social, physical and intellectual development and discipline based on your baby's readiness, and enhancing interactions during daily routines.

**Registration**

Registration for the event will begin on August 21, 2008 at [www.ccrctulsa.org](http://www.ccrctulsa.org)

Early bird registration through December 31, 2008 of \$279

Registration through April 23, 2009 of \$325

Registration at the door (subject to space) of \$350

Daily registration of \$175 is available

Partial scholarships available on a qualifying basis, contact Karen Smith, Child Care Resource Center at [ksmith@ccrctulsa.org](mailto:ksmith@ccrctulsa.org) for more information and [www.ccrctulsa.org](http://www.ccrctulsa.org) for application forms.

*Spanish and French translation available upon request prior to April 1, 2009.*

**Hotel accommodations**

Crowne Plaza-Tulsa  
100 East 2nd Street  
918.582.9000

Reference the International Infant Toddler Conference

**Travel arrangements for domestic and international flights may be made through**

Mary Ann Thoman-Travel Connections  
[Maryanne@travelcnx.com](mailto:Maryanne@travelcnx.com)  
918.492.3510 phone

Transportation from the airport to the hotel is complimentary through the hotel shuttle service.

Daily conference parking rates: \$4.00 to \$5.50.

## Presenters

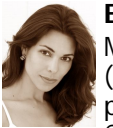
The presenters for the conference represent internationally and nationally known authors and practitioners in early care and learning of infants and toddlers.



**Janet Gonzalez-Mena, MA** has been teaching others about infants and toddlers for the last 30 years. Her book *Infants, Toddlers, and Caregivers* is in its 8<sup>th</sup> edition, and she has written 11 other books and numerous articles. She trains trainers for WestEd's Program for Infant/Toddler Caregivers (PITC). Janet has studied at the Pikler Institute in Budapest and was a student of Magda Gerber. She has presented across the U.S. and internationally on early care and education, infants and toddlers, diversity, and family-centered care. Janet is a Resources for Infant Educators Associate and Secretary of the Board for the Pikler-Loczy Fund USA\*. A copy of her book, *Dragon Mom*, will be given to each conference participant.



**Beverly A. Kovach, MN** has been working with and consulting in early childhood centers for more than 30 years. Beverly consults with Magda Gerber's Resources for Infant Educators as a mentor teacher and board member. Beverly is a Montessori teacher-trainer, consultant, and presenter at national and international conferences. She is co-author of *Being with Babies*. She founded Little Learner's Lodge and Montessori of Mt. Pleasant, South Carolina in 1977 and established Waverly Place (the first RIE Satellite Center in the USA) in 2003. She is Vice President of Pikler-Loczy Fund and has trained extensively in the Piklerian approach since 1995.



**Elsa Chahin** was born in Mexico and grew up in both the United States and Mexico. She is a RIE Associate and a Program for Infant/Toddler Caregivers (PITC) trainer. Elsa is a UCLA certified lactation educator and works with professionals and parents. She is on the Board of Pikler/Loczy Fund USA. As a Certified Interpreter/Translator, Elsa collaborated in the Spanish translation of Magda Gerber's book *Your Self-Confident Baby* and the video, *See How They Move*. She has written several articles and presents nationally and internationally on infant and toddler development.



**Laura Briley** has been President and Owner of Day Schools, Inc, since 1976. She currently operates four NAEYC accredited centers in Tulsa, Oklahoma. She set up a pre-school in Orphanage #5 in Bucharest, Romania from 1990-1994 and trained Peace Corps Volunteers and UNICEF personnel in best practices. Laura founded Pikler-Loczy Fund USA in 2003 to assist in raising awareness and support for this model residential institute. Last October, she organized a training for orphanage personnel from Belize, Mexico, Israel, Singapore, and Indonesia to go to Budapest to learn how to better care for institutionalized children.



**Agnes Szántó-Féder, PhD** in Genetic Psychology from France. She was born in Budapest, Hungary, and has conducted university courses in France, in Belgium, and in Argentina. She is Professor in Escuela Practica de Psicomotricidad (Argentina) since 1991. She has been the Vice President of the Association International Pikler and Vice President of the Association Pikler-Loczy de France. She is also on the Board of Pikler-Loczy Fund USA. She is the author of 18 books on early childhood psychology, with an emphasis on early motor development. She is a sought after international presenter with recent conferences in Chile, Peru, and Ecuador.



**Alexandra Curtis Boyer** has worked with infants, toddlers and parents/caregivers since 2001, when she was first introduced to the work of Magda Gerber and Resources for Infant Educators. Founder of [www.acorntoakbaby.com](http://www.acorntoakbaby.com), Alexandra is a RIE Associate and continues her studies in Maternal and Child Health. Mother to three lovely daughters, a Certified Lactation Counselor and Newborn Massage instructor, Alexandra leads Parent-Infant Classes and runs a Prenatal Education Program for Tampa's Baby Bungalow-Child Abuse Council. A Board Member of the Pikler-Loczy Fund USA, promoting excellence in Infant-Toddler Development, Alexandra presents on a variety of "birth to two" and parenting topics, both nationally and internationally. *How to Play – Simple Toys Make Active Babies* is Alex's first publication in addition to translations of early childhood research for the Pikler Institute.



**Deborah Greenwald, MA** joined WestEd in 2002 as a Senior Program Associate at the Center for Child and Family Studies. She directs the Infant-Toddler Guidelines Project for the California Department of Education and is a faculty member of the Program for Infant/Toddler Caregivers. Prior to working at WestEd, she spent 15 years in infant-toddler group care. She taught parent-infant guidance classes and was an infant-toddler specialist in a resource and referral agency.



**Ruth Anne Hammond, MA** studied with Magda Gerber at Resources for Infant Educators, also training at the Pikler Institute in Budapest, Hungary. She has been on the faculty of Pacific Oaks College and Children's School in Pasadena since 1996 and has recently become a student of the renowned clinician and researcher, Dr. Allan N. Schore. Ms. Hammond is an Associate and the President of the Board of Directors of RIE, teaching parents and professionals in many settings.



**Denise A. Da Ros-Voseles, PhD** is an associate professor in the Department of Curriculum and Instruction at Northeastern State University, Broken Arrow, Oklahoma. Denise began her career working with abused and neglected infants and toddlers. She speaks at national and international conferences and publishes on topics ranging from creating caring environments and working with infants and toddlers to working with pre-service teachers. Her latest book, co-authored with Beverly Kovach, MN is *Being with Babies*.

**Johanna Herwitz, PhD** is a licensed clinical psychologist in New York City. Her private practice centers around treating adults with anxiety disorders. Her special interest is working with families who have attachment issues. She conducts classes for families of children 3 months – 3 years. She is recognized as a RIE trained specialist in parent infant relationships and infant development. She speaks nationally regarding family relations. Johanna is an Executive Board member of the Pikler-Loczy Fund USA.

#### **\*The Pikler-Loczy Fund USA**

The Pikler-Loczy Fund USA's mission is to actively support the work of Dr. Emmi Pikler and the Pikler Institute in Budapest, Hungary. Its goal is to inspire adults to embrace the wonder and harmony of a close and personal relationship with infants and toddlers based on the Pikler Approach in home and group settings. It is committed to service, training, and research and demonstrating the belief that all children have the right to be respected as competent and autonomous individuals by a caring adult.

The Pikler Institute (nicknamed Lóczy from the street where it is located) was established in 1946 by pediatrician Dr. Emmi Pikler. The City of Budapest commissioned Dr. Pikler to organize a home for infants and young children who were deprived of their parents until satisfactory living arrangements could be found. Dr. Pikler's concepts and practices included ideas on respecting the child as a person - where he/she is an active individual and is allowed to move freely in a safe environment. To learn more about the Pikler Institute, see [www.pikler.org](http://www.pikler.org).

*Proceeds of the conference will benefit the Pikler Institute in Budapest, Hungary.*

#### **\*Resources for Infant Educators (RIE)**

Resources for Infant Educators (RIE) was founded in 1978 by the late educator and infant specialist Magda Gerber and pediatric neurologist Tom Forrest, MD. Based on respect, the RIE approach helps raise authentic infants who are competent, confident, curious, attentive, exploring, cooperative, secure, peaceful, focused, self-initiating, resourceful, involved, inner-directed, aware, and interested. Dr. Emmi Pikler was Magda Gerber's children's pediatrician and her professor. She later worked with Dr. Pikler at the Pikler Institute. Through Dr. Pikler's influence, Magda decided to make the study and care of young children her life's work.

RIE is a non-profit, world-wide membership organization dedicated to improving the quality of infant and toddler care and education through teaching, supporting, and mentoring parents and caregivers. For more information, see the RIE website at [www.rie.org](http://www.rie.org).

**Optional tours and activities on Thursday from the hotel.  
Schedule to be announced.**

**Tulsa Educare**

Tulsa Educare is a state-of-the-art early childhood center that provides education and care for 200 children (from birth to age 5) and their families with full-day, year-round early childhood education, family support services, and ongoing medical care. The *Educare model was developed by the Chicago-based Ounce of Prevention Fund*, which seeks to intervene in generational poverty and promote best practices in early childhood education.

As one of only 8 sites nationally, Tulsa Educare, Incorporated (TEI) is a newly incorporated not-for-profit organization created to provide high-quality early childhood education and care to low-income families living in Tulsa. TEI was created through a partnership with Community Action Project of Tulsa County (CAP), Family and Children's Services, Tulsa Community Foundation, and Oklahoma University Pediatrics.

A tour and presentation of the Educare model will be conducted by Diane Horm, PhD of the University of Oklahoma, Early Childhood Education Institute.



**Diane Horm, PhD** is the George Kaiser Family Foundation Endowed Professor in Early Childhood Education and Director of the Early Childhood Education Institute University of Oklahoma, Tulsa. She has published over 42 articles and book chapters on early childhood. She has recently been awarded a Zero-to-Three Harris Mid-Career Fellowship, Collaborative Infant/Toddler Professional Development Model. Dr. Horm will design, implement, and disseminate the University of Oklahoma component of an infant-toddler-focused degree that is based on national standards for early childhood education programs. This initiative will enable students to smoothly transition from Tulsa Community College to bachelor degree programs that lead to early childhood teacher licensure.

**The Hundred Languages of Children**

The scientific, artistic, and emotional discoveries of very young children will be on display in a special exhibit, "The Hundred Languages of Children," at the Northeastern State University Broken Arrow Campus. This international exhibit is one of two stops in the US in 2009. The exhibit's 140 large panels, light boxes, and cases document young students' explorations and introduce the *educational philosophy of a small Italian city that has focused on early childhood education* for more than 30 years. The Oklahoma showing is sponsored by the Riverfield Country Day School.



Original artwork, photographs, displays, transcriptions of children's dialogues, and the comments of their teachers create a portrait of the preschools in Reggio Emilia, a northern Italian community. The city has been recognized internationally for its innovative, publicly funded network of full-day infant-toddler centers and schools for young children, including children with disabilities.

The Reggio Emilia philosophy is based on belief in children's potential for learning, exploring, and entering into relationships with peers, teachers, the environment, and the community. Educators are viewed as researchers and partners with children in the learning process; children make hypotheses, explore their environment, and discover connections and meanings, and they "have many, many languages for expressing and communicating" what they discover, according to the Italian educators.

# International infant & toddler conference

Child Care Resource Center  
18 N Norwood Ave  
Tulsa, OK 74115



"What is essential is that the child discover as much as possible for himself. If we help him solve all the unknowns he encounters we deprive him of experiences which are of the greatest importance for his intellectual development."  
Dr. Emmi Pikler

NON-PROFIT ORG.  
U.S. POSTAGE  
**PAID**  
Tulsa, OK  
Permit No. 464